



Hazel
Creek
Montessori



Objectives:

To prepare a learning environment that is challenging and developmentally appropriate
To instill in the child an excitement and enthusiasm toward learning.

To assist the child in the development of responsibility toward self, others and the environment.

To strive for the growth of a wonderful self concept within the child.

To affirm the process of the child becoming, not the products that he or she uses to get there.

To provide complete cycles of learning by integrating the outdoor spaces into the total atmosphere of our school.

To create a wonderful community of families with which to enjoy life on our special island.

Hazel Creek Montessori is pleased to provide a unique opportunity for the children of Bainbridge Island to explore the richness of the world around them and to experience the excitement of learning.

Our goal is to teach children how to enjoy learning.

The setting of Hazel Creek Montessori, on 10 acres of meadows and woods with a meandering stream and nature trails, provides a physically beautiful environment.

The setting is, in itself, an exceptional learning resource with areas for exploration and scientific discovery.





The integration of outdoor spaces into the total atmosphere of Hazel Creek Montessori sets it apart.

Our location accesses the children to the Grand Forest and the Meigs Farm Wetlands Preserve.

The two physical plants include an English cottage capturing the charm of a "one room" school house and a country western style school.

The supporting outbuildings include a children's greenhouse and miniature gardens, an indoor swimming pool and a covered equestrian riding facility, sport courts and a country-style barn with a built in theatre.

The Hazel Creek Corporation owns quarter horses for our riding program.



Janice & Ollie Pedersen,
Owners & Founders

Programs

Half-day Pre-school 3-6 years
Two sessions
Monday - Friday 9:00 a.m. - 12:00 a.m.
12:15 p.m. - 3:30 p.m.
(5 days per week)

Full-day Pre-school 3-6 years.
All day Monday - Friday
9:00 a.m. - 3:30 p.m.
(choice of 2, 3, 4 or 5 days per week)

Kindergarten
Monday - Friday
9:00 a.m. - 12:00 a.m.
Kindergarten 12:15 p.m. - 3:30 p.m.
Kindergarten (5 days/week only.
Half or full days available for Kindergarten.)

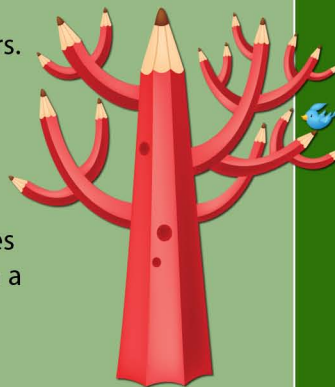
Toddler Program 1 - 2 1/2 years
All day (6 hours or more)
Monday - Friday
(Choice of 2, 3, 4 or 5 days/week)

Extended Day Care
School aged children 6 - 12 yrs.
6:30 a.m. - 9:00 a.m.
3:00 p.m. - 6:30 p.m.
*Ordway & Wilkes bus pick up & delivery.

Summer Camp 3 - 12 yrs.

Admissions:

Application is open to all children between ages 12 months to 6 years, on a non discriminatory basis.



For more information call (206) 780-1928

www.hazelcreekmontessori.com



CURRICULUM

- Math
- Language
- Science
- Art
- Drama
- Gardening
- Hiking
- Music
- Cultural Studies
- Farm Animals
- Native American Studies
- * Computer Class
- * Horseback Riding
- * Swimming
- Spanish

Specialists provide enrichment programs to enhance our curriculum
* Optional for additional fee.

